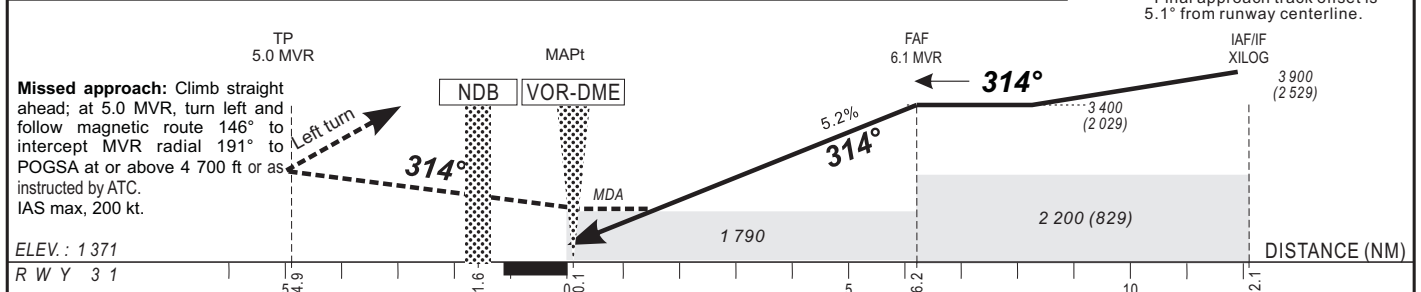


Distance to MVR (NM)	FAF	6	5	4	3	2	1	Notes : - Timing not authorized for defining the MAPt. - Final approach track offset is 5.1° from runway centerline.
Altitude (ft)	3400	3370	3050	2730	2410	2090		



CAT	VOR-DME				CIRCLING (3)				RVR for take-off: CAT A - B - C : 400
	OCA (OCH)	MDA MDH	RVR(1) RVR(2)	OCA (OCH)	MDA MDH	VIS			
A	1785 (414)	1790 (420)	1200 1500	2082 (691)	2090 (700)	1500			
B	1785 (414)	1790 (420)	1300 1500	2082 (691)	2090 (700)	1600			
C	1785 (414)	1790 (420)	1400 1800	2231 (840)	2240 (840)	2400			
D									

Notes :	Timing		Timing	
	KT	MIN SEC	KT	MIN SEC
(1) With approach lights	100	3 Min 40	150	2 Min 26
(2) Without approach lights	110	3 Min 20	160	2 Min 17
(3) Daytime only - OCH and MDH AAL.	120	3 Min 03	170	
(**) Transition altitude: 5400 ft from QDM 058° to 228° and 4500 ft from QDM 228° to 058°	130	2 Min 49	180	

CHANGES : First edition.